

Beauty of Transparency

Highest Definition Transparent LED Poster

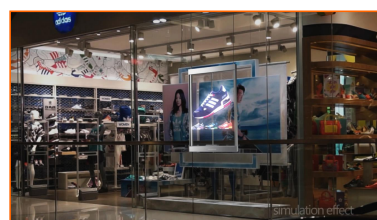
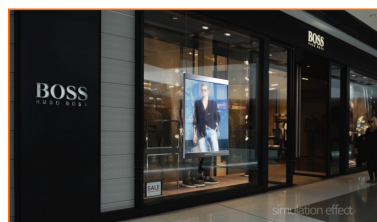


For all Windows' Advertising of the World

This is not only a LED display, but also a work of art.
It is designed specifically for all glass showcase, glass windows;
It is born for all bars, stores, shops, retailers, ect.

LEDbow Technologies Limited

Addr:
Flat A, 15/F, Hillier Comm Bldg, 65-67 Bonham Strand
East, Sheung Wan, Hong Kong
Office:
RM. 1107, International Plaza, No. 1 Chengmentou Xi
Road, Chancheng District, Foshan City, Guangdong
Province, 528000 China.
Email & Phone:
SALES@LEDBOW.COM
CONNIE@LEDBOW.COM, +86 139 2866 4939
VINCENT@LEDBOW.COM, +86 130 4931 8401
CANDY@LEDBOW.COM, +86 177 227 00657
NATHAN@LEDBOW.COM, +86 189 277 00657



Quad2.5

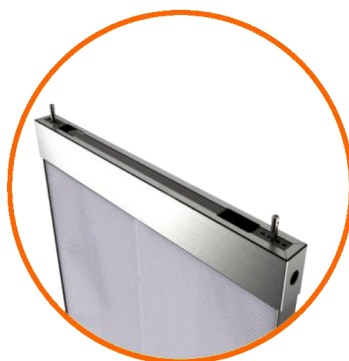
Highest Definition
Transparent LED Poster
of the World



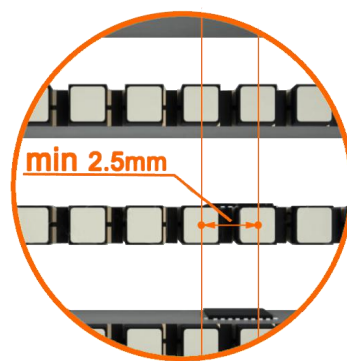
Resolution: 384*224 pixels
Transparency: 64%



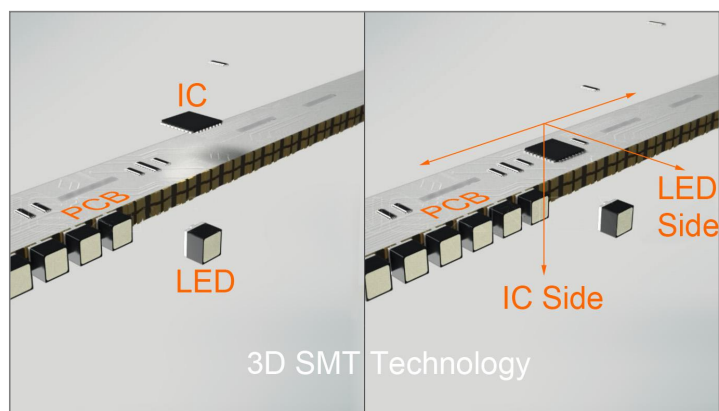
Full Extruded Al. Structure



Aviation Connector for Signal&Power



Min 2.5mm Pixelpitch



3D SMT Technology



High Transparency



High Brightness

Arc3

Arc3s

Highest Transparency
LED Poster



Arc3 Resolution: 256*180 pixels
Arc3s Resolution: 192*128 pixels
Transparency: 70%



Full Extruded Al. Structure



Utility Power Socket



70% Transparency

The first LED display adopts **3D SMT technology** of the world.

High transparency near to **70%**, see through indoor and outward clearly.

High brightness of **5500+** nits, attractive in daylight.

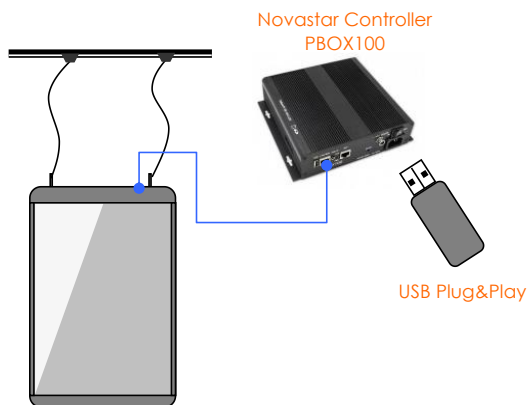
Nationstar outdoor SMD2020 with anti-UV, enduring for long lifespan.

Full **extruded aluminum structure**, strong and firm.

3mm Toughened glass protecting front and back side, free from troubles of splash and dust.

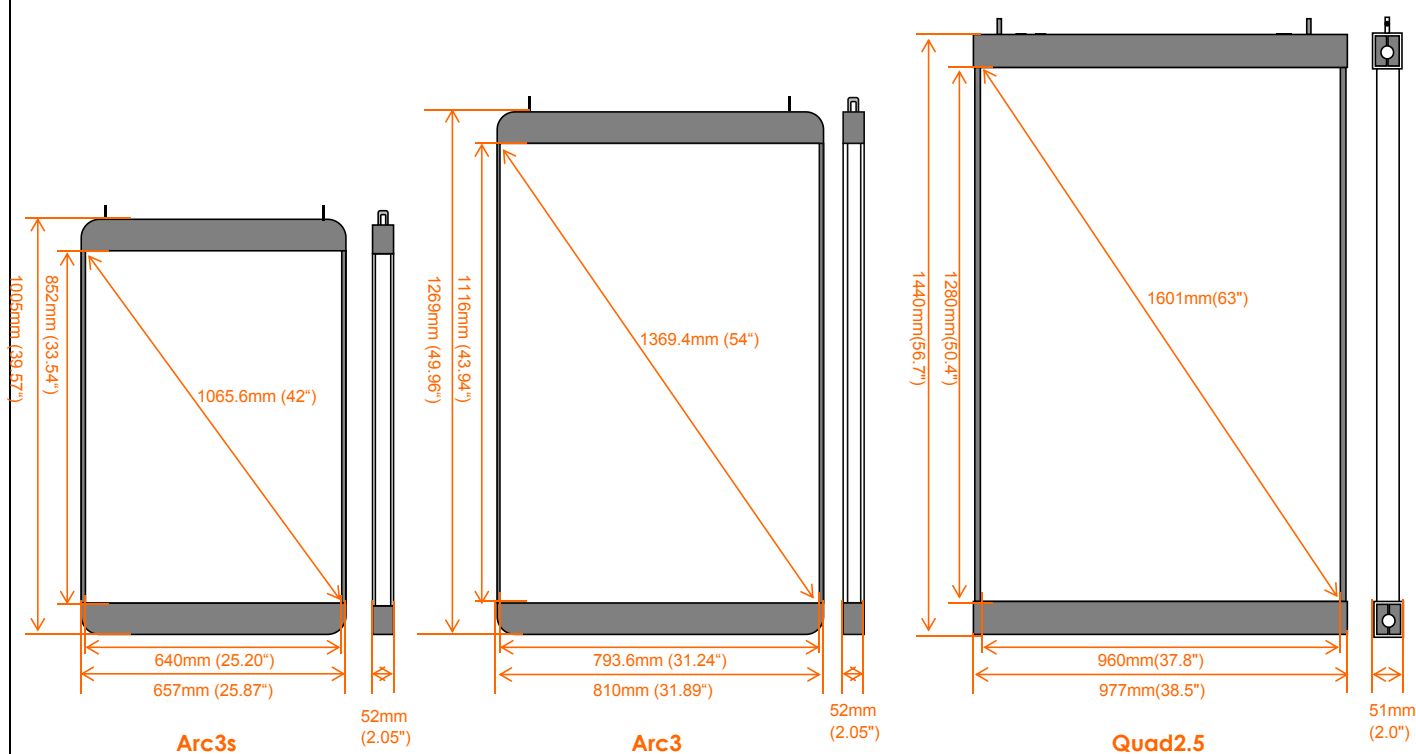
CE and **UL** passed certificated by TUV.

Control System



Copy Programs
from PC into USB

USB-disk Plug&Play. It is off line working from PC. Just a USB(Flash-disk) copy programs and plug into controller, it will play automatically.



Model	Arc3s	Arc3	Quad2.5
Pixel Pitch(mm)	W 3.33 × H 6.66	W 3.1 × H 6.2	W2.5 × H5.71
LED Model	SMD2020	SMD2020	SMD2020
Brightness(nit)	≥5500	≥5500	≥6000
Transparency	70%	70%	65%
Displaying Area Size(WxH)	640mm × 852mm (25.20" × 33.54")	793.6mm × 1116mm (31.24" × 43.94")	960mm × 1280mm (37.8" × 50.4")
Cabinet Full Dimension(WxHxD)	657mm × 1005mm × 52mm (25.87" × 39.57" × 2.05")	810mm × 1269mm × 52mm (31.89" × 49.96" × 2.05")	977mm × 1440mm × 51mm (38.5" × 56.7" × 2.0")
Display Resolution(WxH)	192 × 128	256 × 180	384 × 224
Module Resolution(WxH)	96 × 16	128 × 20	192 × 28
Max. Power(W/set)	600	720	970
Avg. Power(W/set)	180	210	290
Ingress Protection	IP62	IP62	IP62
Refresh Rate(Hz)	3000	3000	3000
Input Power	AC110V~AC240V	AC110V~AC240V	AC110V~AC240V
Display Weight	20kg/set (44.1lb/set)	28kg/set (61.74lb/set)	42kg/set (92.59lb/set)
Package Weight	30kg/set (66lb/set)	45kg/set (99lb/set)	65kg/set (143lb/set)
Package Size	1165mm × 807mm × 220mm (45.86" × 31.77" × 8.66")	1430mm × 960mm × 220mm (56.3" × 37.8" × 8.67")	1600mm × 1127mm × 220 (63" × 44.37" × 8.67")
Package mated	Plywood Case	Plywood Case	Plywood Case
Working Temp	-10℃~40℃	-10℃~40℃	-10℃~40℃